

## ORIGINAL ARTICLE

# Verbal Creativity Correlates with the Temporal Variability of Brain Networks During the Resting State

Jiangzhou Sun<sup>1,2,†</sup>, Zhaowen Liu<sup>3,4,†</sup>, Edmund T. Rolls<sup>5,6,†</sup>, Qunlin Chen<sup>1,2,†</sup>, Ye Yao<sup>4</sup>, Wenjing Yang<sup>1,2</sup>, Dongtao Wei<sup>1,2</sup>, Qinglin Zhang<sup>1,2</sup>, Jie Zhang<sup>4</sup>, Jianfeng Feng<sup>4,5,7,8</sup> and Jiang Qiu<sup>1,2</sup>

<sup>1</sup>Key Laboratory of Cognition and Personality (SWU), Ministry of Education, Chongqing 400715, China, <sup>2</sup>School of Psychology, Southwest University (SWU), Chongqing 400715, China, <sup>3</sup>School of Computer Science and Technology, Xidian University, Xi'an 710071, Shanxi, PR China, <sup>4</sup>Institute of Science and Technology for Brain-Inspired Intelligence, Fudan University, Shanghai 200433, PR China, <sup>5</sup>Department of Computer Science, University of Warwick, Coventry CV4 7AL, UK, <sup>6</sup>Oxford Centre for Computational Neuroscience, Oxford, UK, <sup>7</sup>Collaborative Innovation Center for Brain Science, Fudan University, Shanghai 200433, PR China and <sup>8</sup>Shanghai Center for Mathematical Sciences, Shanghai 200433, PR China

Address correspondence to Jiang Qiu, Faculty of Psychology, Southwest University, No. 2, TianSheng Road, Beibei district, Chongqing 400715, China. Email: qiu318@swu.edu.cn; Jianfeng Feng, Department of Computer Science, University of Warwick, Coventry CV4 7AL, UK. Email: jianfeng64@gmail.com; Jie Zhang, Institute of Science and Technology for Brain-Inspired Intelligence, Fudan University, Shanghai 200433, PR China. Email: jzhang080@gmail.com

<sup>†</sup>Jiangzhou Sun, Zhaowen Liu, Edmund T. Rolls, and Qunlin Chen contributed equally.

## Abstract

Creativity is the ability to see the world in new ways. Creative individuals exhibit the ability to switch between different modes of thinking and shift their mental focus. This suggests a connection between creativity and dynamic interactions of brain networks. We report here the first investigation into the relationship between the reconfiguration of dynamic brain networks during the resting state and verbal creativity using two fMRI datasets involving 574 subjects. We find that verbal creativity correlates with temporal variability of the functional-connectivity (FC) patterns of the lateral prefrontal cortex, the precuneus, and the parahippocampal gyrus. High variability of these regions indicates flexible connectivity patterns which may facilitate executive functions. Furthermore, verbal creativity correlates with the temporal variability of FC patterns within the default mode network (DMN), between the DMN and attention/sensorimotor network, and between control and sensory networks. High variability of FCs between the DMN and attention networks characterizes frequent adjustments of attention. Finally, dynamic interaction between the cerebellum and task control network also contributes to verbal creativity, suggesting a relationship between the cerebellum and creativity. This study reveals a close relationship between verbal creativity and high variability of cortical networks involved in spontaneous thought, attention and cognitive control.

**Key words:** attention/control networks, creativity, default mode network, temporal variability

## Introduction

Creativity is commonly defined as the ability to produce something both novel and useful (Stein 1953; Sternberg and Lubart 1996; Runco and Jaeger 2012). Creative thinking is linked not only to economic development and social progress, but also to almost all areas of daily life (Mumford 2002; Dietrich and Kanso 2010). Individuals with high creativity appear to have a richer and more flexible semantic associative network and can build relationships between apparently unrelated things or concepts (Bossomaier et al. 2009). An important trait for creative people is that they are more capable of shifting between abstract, analytical, thinking, and dreaming, reverie thinking (Fink et al. 2009). The ability of creative people to shift between these ways of thinking may be reflected in the variability during the resting state. Indeed, the resting state is likely to be an active state both physiologically and psychologically (Morcom and Fletcher 2007). Although the relationships between cognition and the resting state is still not fully understood (Morcom and Fletcher 2007), the activity of brain networks such as the default mode network (DMN) is associated with various cognitive processes such as mind-wandering, future thinking (Schacter et al. 2012), and perspective taking (Buckner and Carroll 2007). Previous resting-state fMRI studies showed that the coupling of large scale brain systems such as the DMN and the control network is related to creativity (Beaty et al. 2014, 2015; Chen et al. 2014; Liu et al. 2015). Furthermore, several studies showed that resting-state dynamic functional connectivity is related to cognitive flexibility and openness to experience which are closely related to creativity (Yang et al. 2014; Braun et al. 2015, 2017; Chen et al. 2016; Cohen 2017). Based on all the above, the present study explored the relationship between dynamic functional connectivity during the resting state and creativity which was measured separately in all the participants.

A wide variety of neuroimaging studies (Jung-Beeman et al. 2004; Qiu et al. 2010; Abraham et al. 2012; Aziz-Zadeh et al. 2013; Zhu et al. 2013; Sun et al. 2016) have been conducted to explore the neural bases of creativity, and wide-spread brain areas have been implicated in divergent thinking (Dietrich and Kanso 2010; Jung et al. 2013; Fink and Benedek 2014). Our recent meta-analysis of task-fMRI showed that the lateral prefrontal cortex, the posterior parietal cortex, the precuneus, the anterior cingulate cortex, and the temporal cortex are typically activated in creativity-related processes (Wu et al. 2015). Resting-state fMRI analysis reveals that creativity is associated with functional connectivity (FC) between a large set of brain regions and networks (Takeuchi et al. 2012; Beaty et al. 2014, 2016; Wei et al. 2014). For example, higher creative ability was related to greater resting-state FC in the inferior frontal cortex and DMN (Beaty et al. 2014). The DMN is more active at rest than it is in a range of tasks (Raichle et al. 2001; Raichle and Snyder 2007). The DMN has been related to the generation of creative thinking (Jung et al. 2013), and the coupling between the DMN and other networks has also been closely related to creativity (Jung et al. 2013).

The frontal lobe, which is closely related to executive functions (such as cognitive flexibility, inhibitory control, and working memory), also contributes to creative thinking (Miller and Cohen 2001; Koehlin et al. 2003; Aron et al. 2004; Petrides 2005; Alvarez and Emory 2006; Dietrich and Kanso 2010). Cooperation between brain regions associated with cognitive control (such as dorsolateral prefrontal areas) and other brain regions helps to generate original ideas (Beaty et al. 2014). In addition, the role of the cerebellum in creativity has received more and more attention. The cerebellum is involved in high-level functions, and

cortical-cerebellar interaction is associated with creative thinking (Akshoomoff et al. 1997; Vandervert et al. 2007; Bostan et al. 2013; Kh et al. 2014; Leggio and Molinari 2015; Vandervert 2015).

Most existing studies, however, have only paid attention to the static FC in resting-state fMRI or activations in task-related fMRI, ignoring the dynamic reorganization of brain networks. Recently the temporal variability of brain networks has attracted great attention due to its important role in learning and task performance (Bassett et al. 2011, 2013, 2015; Garrett et al. 2011; Kang et al. 2011; Hutchison et al. 2013; Calhoun et al. 2014; Kopell et al. 2014; Braun et al. 2015; Betzel et al. 2016; Chen et al. 2017), and in serving as a sensitive bio-marker for a number of brain disorders (Yu et al. 2015; Liu et al. 2017). Currently, studies on the relationship between the dynamic properties of brain networks and creativity are rare. Creativity is complex and is involved in cognitive processes such as the generation and evaluation of ideas (Finke et al. 1992). Beaty et al. (2016) proposed that the DMN contributes to the generation of ideas, and the control network contributes to the evaluation of ideas. Both task-related fMRI and resting-state fMRI studies showed that coupling of large scale brain systems such as the DMN and control network is related to creativity (Beaty et al. 2014, 2015; Chen et al. 2014; Liu et al. 2015). Rich FC patterns between these networks may contribute to frequent information exchange which is related to creativity.

Given this background, we therefore hypothesized that the dynamic FC patterns of regions of the DMN, and the dynamic interactions between the DMN, and executive control related networks (control networks and attention networks), and between the cerebral cortex and cerebellum during the resting state, may be related to individual creative thinking. In the present study, we chose verbal creativity because semantic processing is closely related to creativity, and verbal creativity is widely used in neuroimaging studies (Dietrich and Kanso 2010; Green et al. 2012; Zhu et al. 2013; Benedek, Jauk, Fink, et al. 2014; Fink et al. 2014; Wei et al. 2014; Abraham 2014). Previous functional imaging studies have shown a consistent and replicable pattern of brain activity (Fink et al. 2014) in the analysis of verbal creativity. To test our hypothesis, we investigated the correlations between creativity and the temporal variability of cortical areas and networks measured with resting-state fMRI. The approach used in the present study allows localization of regions showing significant variability correlated with behavior or regions showing variability changes between groups, thus helping to define the dynamics of functional brain networks for various behaviors and brain disorders (Zhang et al. 2016). Furthermore, it allows coupling between temporal variability of the functional architecture of a region and its neural activity to be analyzed (Zhang et al. 2016). The larger the temporal variability, the more functional communities/systems this region will be related to across time windows. We extend in this paper measures of temporal variability associated with specific brain regions (Zhang et al. 2016), to the temporal variability of FCs within and between specific resting-state networks. Here, we show that high temporal variability within and between whole networks is reflected also in richer FC patterns within and between networks. Given that cerebral-cerebellar connectivity has been shown to be related to creativity (Gonen-Yaacovi et al. 2013; Saggari et al. 2015; Vandervert 2015), we also analyzed the relationship between verbal creativity and the temporal variability of cerebral-cerebellar FC. We used one dataset involving 304 participants, and in addition cross-validated the findings in a separate cohort with 270 subjects.

## Materials and Methods

### Participants

There were two cohorts of subjects recruited in this study. The first cohort involved 304 participants recruited from the Southwest University, China. In the second dataset, there were 270 participants from the same University. Participants were excluded who did not have behavioral data, or whose head motion showed >10% displaced frames in a scrubbing procedure, or maximal motion between volumes in each direction >3 mm, or rotation about each axis >3° during scanning. All participants were right-handed and none of them had a history of neurological or psychiatric illness. In accordance with the Declaration of Helsinki (1991), written informed consent was obtained from all participants. The study was approved by the Southwest University Brain Imaging Center Institutional Review Board.

### Creativity Assessment

The verbal form of the Torrance Tests of Creative Thinking (TTCT) (Torrance 1974; Ye et al. 1988) was used to assess creativity, which demonstrates adequate reliability ( $r > 0.90$ ) and high predictive validity ( $r > 0.57$ ) for future career and creative achievements. The verbal TTCT consists of several subtasks (Torrance 1974; Ye et al. 1988): Asking Questions and Making Guesses (subtests 1, 2, and 3), where participants write out questions and make guesses about possible causes and consequences of situations based on a drawing of a scene; Improvement of a Product (subtest 4), where the examinees list ways to change a toy elephant so that they will have more fun playing with it; Unusual Uses (subtest 5), where the examinees list interesting and unusual uses of a cardboard box; Unusual questions (subtest 6), where participants think unusual questions relating to a cardboard box; and Supposing (subtest 7), where the examinees are asked to list all the consequences should an improbable situation come true. For each task, 3 different creative dimensions including 1) originality (the degree of originality of the responses, which is associated with thinking “outside of the box”), 2) flexibility (the number of different categories of responses, which reflects the ability to shift between conceptual fields), and 3) fluency (the number of meaningful and relevant responses, which is associated with the ability to generate and consider several different possibilities) were scored.

The total verbal creativity score is the sum of 3 dimensions of all subtasks. Three trained postgraduates scored the verbal creativity responses to all items of the TTCT for all participants. The 3 raters majored in psychology and were blind to the goal of this research. Their inter-rater correlation coefficient was significant (ICC > 0.90). For the first dataset, all 7 tasks in the verbal TTCT were performed, while in the second dataset, participants completed the improving products part of the TTCT.

### Assessment of General Intelligence

In the first dataset, in order to examine intellectual ability, participants completed the Combined Raven's Test (CRT), which is an intelligence test with a high degree of reliability and validity (Tang et al. 2012). The reliability coefficient was 0.92 (Li and Chen 1989; Wang and Qian 1989). The CRT, which included Raven's standard progressive matrix (C, D, E sets) and Raven's colored progressive matrix (A, AB, B sets), consisted of 72 items revised by the Psychology Department of East China Normal University in 1989. The score on this test (the number of correct

answers given in 40 min) was used as a psychometric index of individual intelligence. In line with standard practice, the current study focused on the total score of the test (Jaeggi et al. 2008; Takeuchi et al. 2010).

### Neuroimaging Data Acquisition

For both datasets, the neuroimaging data were collected in the Southwest University China Center for Brain Imaging using a 3.0 T Siemens Trio MRI scanner (Siemens Medical, Erlangen, Germany). A magnetization-prepared rapid gradient echo (MPRAGE) sequence was used to acquire high-resolution T1-weighted anatomical images (repetition time = 1900 ms, echo time = 2.52 ms, inversion time = 900 ms, flip angle = 9°, resolution matrix = 256 × 256, slices = 176, thickness = 1.0 mm, voxel size = 1 × 1 × 1 mm<sup>3</sup>).

During resting-state fMRI scanning, the subjects were instructed to lie down, close their eyes, and rest without thinking about a particular thing, but not to fall asleep. The 8-min scan of 242 contiguous whole-brain resting-state functional images was obtained using gradient-echo-planar imaging (EPI) sequences with the following parameters: slices = 32, repetition time (TR)/echo time (TE) = 2000/30 ms, flip angle = 90°, field of view (FOV) = 220 mm × 220 mm, and thickness/slice gap = 3/1 mm, voxel size 3.4 × 3.4 × 4 mm<sup>3</sup>.

### fMRI Data Preprocessing

All fMRI data were preprocessed using SPM8 (<http://www.fil.ion.ucl.ac.uk/spm>) and a Data Processing Assistant for Resting-State fMRI (DPARSF). We first discarded the first 10 EPI scans to suppress the equilibration effects and the remaining scans were slice timing corrected. Then, the data were realigned and normalized to a standard template (Montreal Neurological Institute) and resampled to 3 × 3 × 3 mm<sup>3</sup>. All fMRI time-series underwent spatial smoothing (8 mm Full Width Half Maximum FWHM), band-pass temporal filtering (0.01–0.1 Hz), nuisance signal removal from white matter and cerebrospinal fluid, global mean signal regression, and 6 rigid-body motion correction parameters. We carefully performed the following procedures to ensure data quality: 1) subjects with poor structural scans, or functional MRI data, making successful preprocessing, that is, normalization to Montreal Neurological Institute (MNI) space, difficult or impossible, or without complete demographic information, were excluded; and 2) for head movement, subjects were excluded with >10% displaced frames in a scrubbing procedure, or maximal motion between volumes in each direction >3 mm, and rotation about each axis >3°. See supplemental information for a detailed discussion of global mean signal regression and data scrubbing.

### Temporal Variability of the FC Profile of a Brain Region

The temporal variability of a brain region was obtained by correlating the FC profile of a brain region across different time windows, which reflects the dynamical reconfiguration of a brain region into distinct functional modules at different times, and is indicative of brain flexibility and adaptability (Zhang et al. 2016). Here we adopted the Power-264 module parcellation, that is, with 264 ROIs defined based on Power et al. (2011). These ROIs span the cerebral cortex, subcortical structures, and the cerebellum and can be divided into 13 brain network systems. To characterize the temporal variability of a given ROI (see Fig. 1), we first segmented all BOLD signals (see Fig. 1a) into

$n$  non-overlapping windows with length  $l$ . The whole-brain FC network  $F_i$  (an  $m_s \times m_s$  matrix, with  $m=264$  nodes) in the  $i$ th time window was then constructed, with the Pearson correlation being the measure of FC (see Fig. 1). The FC profile of region  $k$  at time window  $i$  is denoted by  $F_i(k, :)$  (shortened as  $F_{i,k}$ , denoted by the shaded column in Fig. 1b), which is an  $m$ -dimensional vector that represents all the functional connections of region  $k$ . The variability of a ROI  $k$  is defined as:

$$V_k = 1 - \overline{\text{corrcoef}(F_{i,k}, F_{j,k})} \quad i, j = 1, 2, 3, \dots, n, i \neq j.$$

We calculate  $V_k$  at a number of different window lengths ( $l =$  equal to 20, 22, 24, ... 40s) and then take the average value as the final variability to avoid arbitrary choice of window length. The variability associated with a region characterizes the flexibility of the region's functional architecture. The larger the temporal variability of a ROI, the more functional communities/systems this region will be involved in at different times. Finally, the sum of the variability of all ROI's was termed the whole-brain variability, which characterizes the mean flexibility of an individual's whole-brain networks.

### Temporal Variability of FCs Within/Between Cerebral Networks

In addition to calculating the variability of the FC profile of a brain region, we furthermore characterized the variability of FCs within a specific network, or between 2 sub-networks, that is, within-network variability (see Fig. 2a) and between-network variability (see Fig. 2b). We followed similar procedures used in regional variability to define within/between-network variability. For a given brain network  $m$ , we denote all FCs within this network in time window  $i$  as  $Fm_i$  (the columns in Fig. 2a), and all FCs between-network  $l$  and network  $p$  in time window  $i$  as  $Fm_{i,l}m_{i,p}$  (the columns in Fig. 2b). The within-network variability of network  $m$  then is:

$$Vw_m = 1 - \overline{\text{corrcoef}(Fm_i, Fm_j)} \quad i, j = 1, 2, 3, \dots, n, i \neq j,$$

while the between-network variability (network  $l$  and network  $p$ ) is defined as:

$$Vb_{lp} = 1 - \overline{\text{corrcoef}(Fm_{i,l}m_{i,p}, Fm_{j,l}m_{j,p})} \quad i, j = 1, 2, 3, \dots, n, i \neq j$$

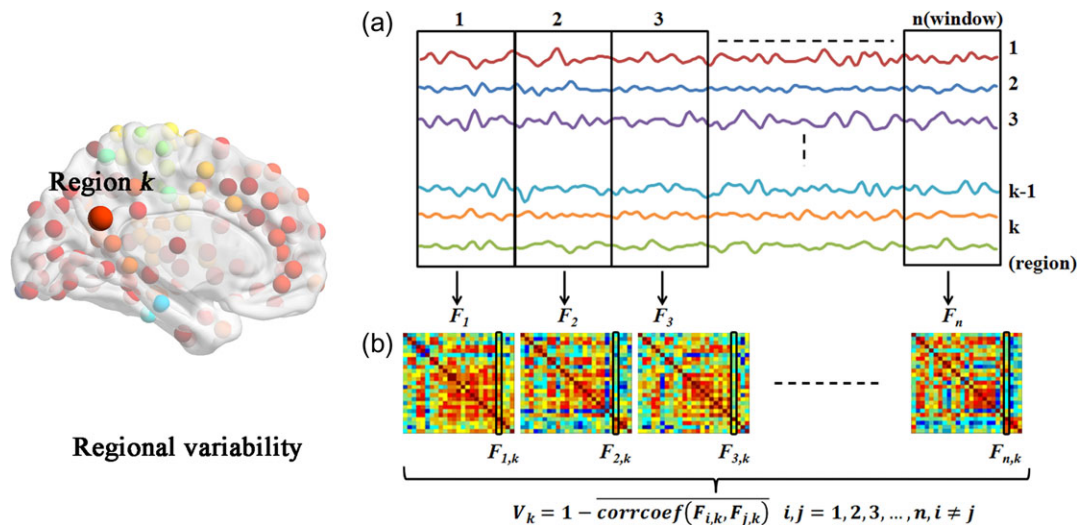
Within-network variability characterizes whether the FCs within a particular brain network are changing synchronously with time. Larger within-network variability indicates that the FC patterns are less correlated across different time windows, and that the network demonstrates more flexibility. Similarly, between-network variability depicts the extent to which the patterns of FC between 2 different brain networks are correlated across different time windows, and large between-network variability indicates patterns of interaction between 2 networks that are abundant. Larger within/between-network variability indicates that the network of interest, or the interaction between 2 networks, demonstrate richer FC patterns possibly underlying versatile functions, or cognitive flexibility.

### Temporal Variability of FCs Within the Cerebellum and FCs Between the Cerebellum and Cerebral Cortex

We also calculated the variability of the FCs within cerebellum, and the variability of FCs between the cerebellum and various networks in cerebral cortex. Following the above work, time-series of cerebellar nodes and cerebral cortex nodes (Power et al. 2011) were extracted and used to calculate the temporal variability.

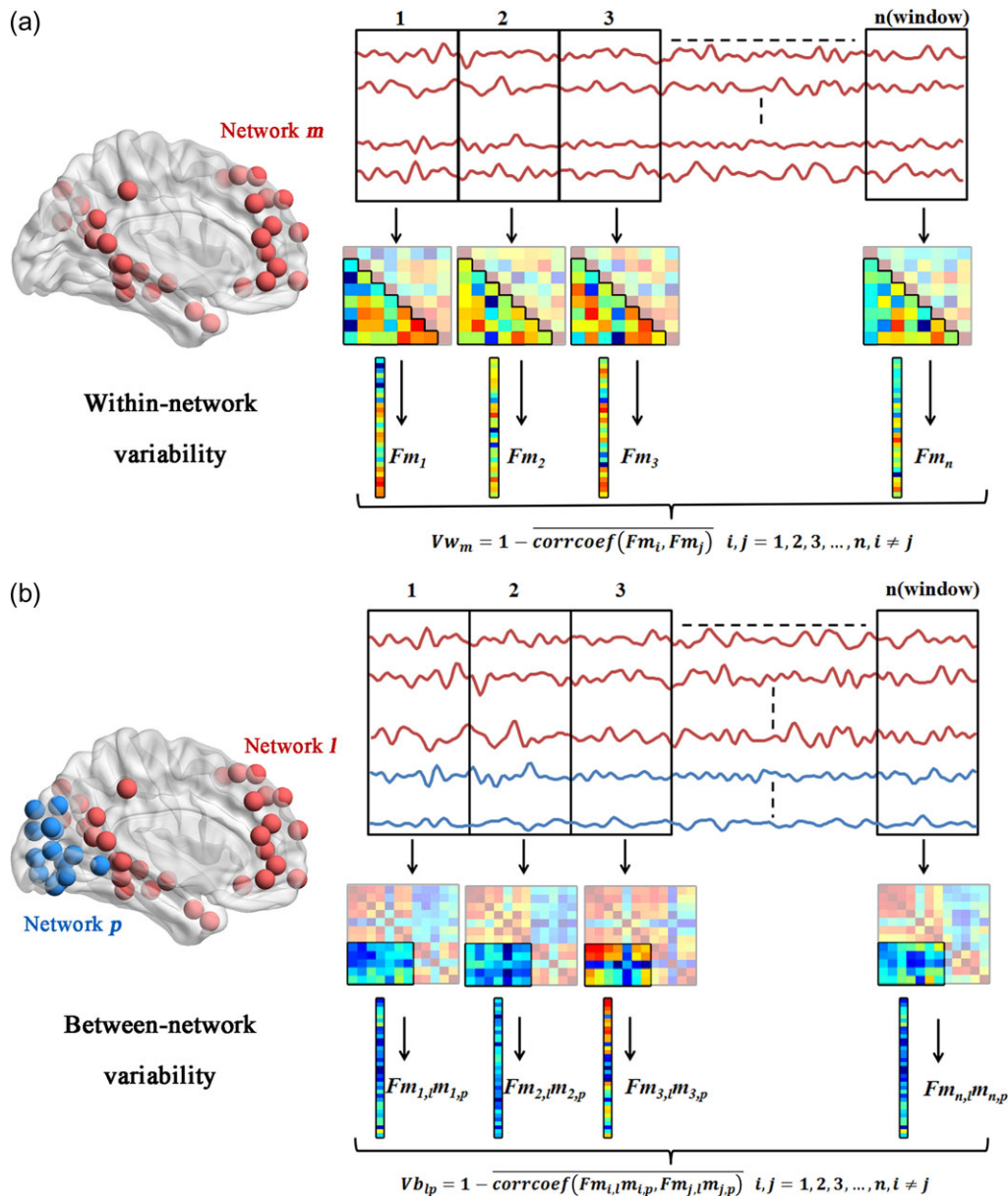
### Correlation Between Variability and the TTCT Score

In order to identify how the dynamic property of the resting-state functional brain networks may be related to individual verbal creativity, the Pearson correlation between the variability (including regional variability, within/between-network variability and whole-brain variability) and the TTCT verbal creativity score was calculated across all individuals, with age, sex, and the Raven's score of intelligence being regressed out. Results surviving Benjamini and Hochberg FDR (BH\_FDR) correction are reported (Benjamini and Hochberg 1995).



**Figure 1.** Temporal variability of an FC profile associated with a brain region (the big red node in the left panel). The left part shows the brain region of interest (with its FC profile). (a) The BOLD time courses of all brain regions were first segmented into non-overlapping windows. (b) In each window the whole-brain functional network was constructed (using Pearson correlations), and the FC profiles associated with brain region  $k$  in each time window (denoted by the shaded column) were correlated and averaged, and subtracted from 1.0, which led to a temporal variability for FC profile associated with brain region  $k$ .





**Figure 2.** Temporal variability of FCs within a network and between 2 networks. (a) The left part shows the network of interest (consisting of red nodes). The right part shows the BOLD time courses of all regions in the network, which were segmented into non-overlapping windows. Then the FC matrix of this network was constructed in each window, and the FCs of the network in each time window were correlated and averaged, subtracted from 1.0, which led to a temporal variability for FCs within a network. (b) The left part shows the 2 networks of interest (denoted by red and blue nodes, respectively). The right part shows the BOLD time courses of regions in these 2 networks, which were segmented into non-overlapped windows. Then the FCs between these 2 networks were obtained in each window. These FCs in different time windows were correlated and averaged, subtracted from 1.0, which led to the temporal variability for the FCs between 2 networks.

### Cross-validation

We used the first dataset to identify the regions or networks whose variability correlated with creativity. To cross-validate the findings from the first dataset, we used an independent set of individuals (a second dataset) with one of the TTCT tasks (“improving products”) the same as the first dataset. We pooled the 2 datasets (for “improving products”) to validate the findings obtained using only the first dataset and the overall TTCT score. The TTCT score for “improving products” in these 2 sets were normalized before subsequent analysis. A 10-fold cross-validation procedure was adopted: in each cross-validation run, 90% of all samples were randomly chosen to perform the

correlation analysis (between the variability of ROIs and the creativity score for “improving products”), and the ROIs surviving FDR ( $P < 0.05$ ) correction were selected. We performed such 10-fold cross-validation 1000 times, and the ROIs (whose variability had significant correlations with the score) that were present in every cross-validation were finally selected.

## Results

### Temporal Variability of Brain Regions

Demographic information about participants is shown in Table S1 in the Supplemental Information. The measurements

used for the temporal variability at the regional level and network level are shown in Figs 1 and 2.

In the first dataset with 304 subjects, the variability of 5 regions from the DMN, 1 from the salience network, and 1 from the auditory network (among all the 264 brain regions) were found to be significantly correlated (FDR corrected,  $P_{BH\_FDR} < 0.05$ ) with the verbal TTCT score, as shown in Table 1 and Fig. 3.

### Within-network and Between-network Variability of the Cerebral Cortex

Among the 13 sub-networks defined in the Power-264 modules (Power et al. 2011), the within-network variability of the DMN was the only one that was significantly positively correlated with the TTCT score ( $r = 0.1873$ ,  $P = 1.14 \times 10^{-3}$ ,  $P_{BH\_FDR} =$

$1.89 \times 10^{-2}$ , see Fig 4). Among all 78 between-network interactions ( $13 * 12/2$ ), we found that 7 between-network variabilities were significantly positively correlated with the TTCT score (see Table 2 and Fig 5). Specifically, the variabilities of the FCs between the DMN and the attention/sensory-motor networks were involved. In addition, the variability of the FCs between the task control and visual/auditory network was also involved.

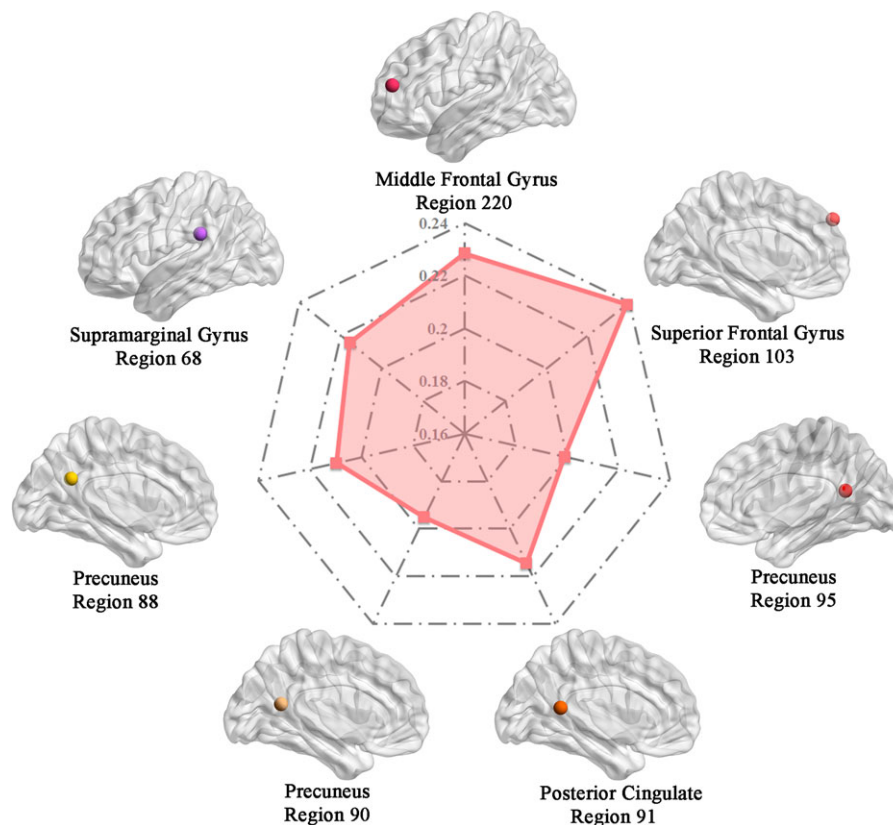
### Within-network and Between-network Variability of the Cerebellum

The within-cerebellum network variability was not significantly correlated with the TTCT score. The correlation between verbal creativity and variability of the connectivity between the

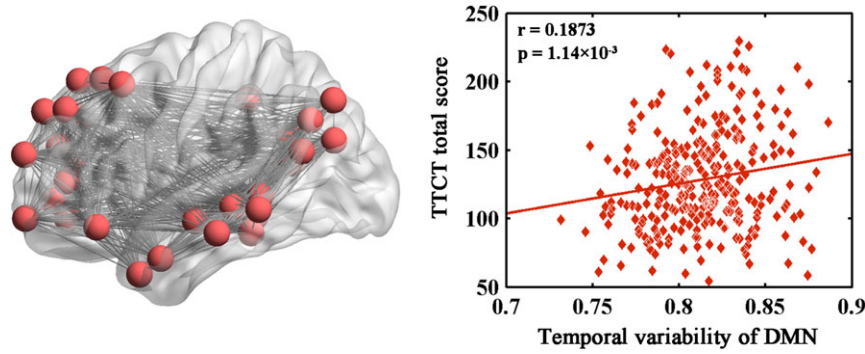
**Table 1** ROIs whose temporal variability significantly correlated with the TTCT verbal score

ROI index	Brain region (anatomical automatic labeling atlas)	$r$	$P$	$P_{BH\_FDR}$
103	Frontal_Sup_L	0.2389	$3.38 \times 10^{-5}$	$8.91 \times 10^{-3}$
91	Cingulate_Post_L	0.2145	$2.05 \times 10^{-4}$	$1.36 \times 10^{-2}$
88	Precuneus_L	0.2098	$2.86 \times 10^{-4}$	$1.51 \times 10^{-2}$
95	Precuneus_R	0.1990	$5.87 \times 10^{-4}$	$2.58 \times 10^{-2}$
90	Precuneus_L	0.1950	$7.60 \times 10^{-4}$	$2.87 \times 10^{-2}$
220	Frontal_Mid_L (LPFC)	0.2285	$7.49 \times 10^{-5}$	$9.88 \times 10^{-3}$
68	SupraMarginal_L	0.2156	$1.90 \times 10^{-4}$	$1.36 \times 10^{-2}$
124	ParaHippocampal_L <sup>a</sup>	0.1501	$3.3 \times 10^{-4}$	<0.05

<sup>a</sup>Represents cross-validation results.



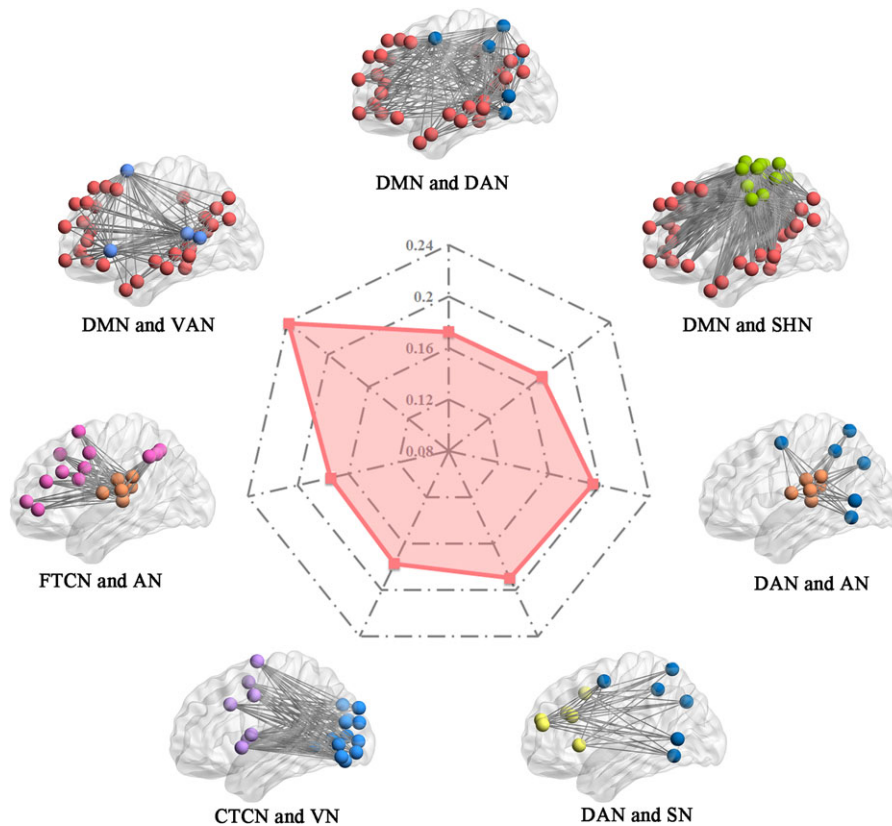
**Figure 3.** Regions whose temporal variability is correlated to the TTCT total score. The radar map in the middle shows the correlation coefficient between the temporal variability of each brain region and the TTCT total score. The small squares in the radar map show the specific correlation coefficient of the temporal variability and the TTCT total score. The brain maps show the location of the corresponding brain regions.



**Figure 4.** The within-network variability of the DMN is correlated with the creativity TTCT total score. The brain map shows the within-network connectivity of the DMN. The correlation map shows that the within-network variability of the DMN is positively related to TTCT total score.

**Table 2** The correlation of between-network variability and the TTCT verbal score

Network1	Network2	<i>r</i>	<i>P</i>	$P_{BH\_FDR}$
Default mode	Ventral attention	0.2388	$3.74 \times 10^{-5}$	$2.92 \times 10^{-3}$
Default mode	Dorsal attention	0.1723	$3.08 \times 10^{-3}$	$3.43 \times 10^{-2}$
Default mode	Sensory/somatomotor hand	0.1728	$3.04 \times 10^{-3}$	$3.43 \times 10^{-2}$
Dorsal attention	Auditory	0.1951	$7.87 \times 10^{-4}$	$3.02 \times 10^{-2}$
Dorsal attention	Saliency	0.1895	$1.16 \times 10^{-3}$	$3.02 \times 10^{-2}$
Cingulo-opercular task control	Visual	0.1771	$2.43 \times 10^{-3}$	$3.43 \times 10^{-2}$
Fronto-parietal task control	Auditory	0.1738	$2.95 \times 10^{-3}$	$3.43 \times 10^{-2}$



**Figure 5.** Between-network variability is correlated with the TTCT total score. The radar map in the middle shows the correlation coefficients of the between-network variability with the TTCT total score. The brain maps show the corresponding 2 brain networks of interest (using different colors). Abbreviations: DMN, default mode network; VAN, ventral attention network; DAN, dorsal attention network; SHN, sensory/somatomotor hand network; AN, auditory network; SN, saliency network; VN, visual network; FTCN, fronto-parietal task control; CTCN, cingulo-opercular task control network.

cingulo-opercular task control network and the cerebellum was marginally significant ( $r = 0.1527$ ,  $P = 9.06 \times 10^{-3}$ ,  $P_{BH\_FDR} = 5.44 \times 10^{-2}$ ). In addition, the variability of the FC between the cerebellum and other cortical networks, such as the dorsal attention network, salience network, and sensory and auditory network, are also found correlated with creativity ( $P < 0.05$ , uncorrected, Supplemental Information Table S2).

### Whole-brain Variability

The whole-brain variability was also positively significantly correlated with the TTCT verbal score ( $r = 0.1296$ ,  $P = 2.6 \times 10^{-2}$ ).

### Cross-validation

One region (ROI index: 124) that belongs to the DMN network (parahippocampal gyrus, PHG) was found whose variability positively correlated with the TTCT sub-score (“improving products”) in the first dataset. Using the second dataset, this region was still identified in all the 10 000 runs of 10-fold cross-validation ( $P_{BH\_FDR} < 0.05$ ). The overall correlation between the variability of this region and the TTCT sub-score was 0.1501 ( $P = 3.3 \times 10^{-4}$ ).

## Discussion

In the present study, we investigated the relationship between the temporal variability of brain networks during the resting state and the verbal creativity of the individual. We correlated the temporal variability of resting-state functional brain networks at 3 different scales (the regional level; the network level: within networks and between networks; and the whole-brain level) to the TTCT verbal score, to identify the neural correlates of creative thinking. We found that the temporal variability of the lateral prefrontal cortex (LPFC), posterior cingulate cortex (PCC), and precuneus within the DMN correlated significantly with the verbal TTCT score. This was complemented by the findings that both the within/between-network variability (associated with the DMN) and the whole-brain network variability were also correlated with verbal creativity. Dynamic interaction between the cerebellum and cerebral cortex was also related to verbal creativity. These results suggest that high temporal variability of FCs of cortical networks and cortical-cerebellar interactions involved in spontaneous thought, attention and cognitive control are important for verbal creativity.

### Temporal Variability for FCs of DMN Regions, LPFC, and Parahippocampus

We found that individuals with high verbal creativity ability displayed large temporal variability in DMN regions including the PCC/precuneus. The precuneus has wide-spread connectivity with cortical and subcortical structures in the resting state (Cavanna and Trimble 2006), and is involved in various memory tasks, such as episodic and source memories (Lundstrom et al. 2005; Sadigh-Eteghad et al. 2014). In particular, the precuneus is activated in creative tasks (Fink et al. 2010; Abraham et al. 2012), and it has been shown to have stage-specific FC bilaterally with the insula, the middle temporal gyrus, and the dorso-lateral prefrontal cortex (Beaty et al. 2015) in a divergent thinking task, suggesting that dynamical reorganization of precuneus connectivity is important in creativity. The high temporal variability of the precuneus indicates that it is functionally interacting with different parts of the cortex during the resting state, which may be related to the retrieval of knowledge/memory

or providing the rich episodic contextual associations (Lundstrom et al. 2005) necessary for creativity (Dandan et al. 2013).

Similarly we found that variability of the parahippocampal gyrus (PHG) was significantly correlated (positively) with the TTCT sub-score “improving products” by cross-validation. The PHG also plays an important role in memory (Bohbot et al. 2015), and was found to be activated in creative tasks (Fink et al. 2009; Ellamil et al. 2012). Several task-related fMRI studies showed that the medial temporal lobe system is critical for creativity (Luo and Niki 2003; Ellamil et al. 2012; Fink et al. 2012; Benedek, Jauk, Fink, et al. 2014). Damage in this region has a negative effect on creative performance (Duff et al. 2013). Higher temporal variability of the PHG may reflect different types of information change in memory systems across different time windows during the resting state (Kesner and Rolls 2015), and a wealth of cortical connectivity patterns helps creativity.

We found a positive correlation between verbal creativity and the temporal variability of the LPFC. The LPFC is widely implicated in both domain-general and domain-specific creative thinking tasks (Abraham et al. 2012; Kleibeuker et al. 2013; Liu et al. 2015; Sun et al. 2016). The FC of the LPFC has been shown to be related to creativity in both task and resting-state fMRI (Beaty et al. 2014, 2015; Li et al. 2016). The fronto-parietal system is critical for creativity (Fink et al. 2009; Shamay-Tsoory et al. 2011; Ellamil et al. 2012; Shah et al. 2013; Saggari et al. 2015). Importantly, the LPFC is consistently activated in cognitive control and executive function tasks including cognitive flexibility, inhibition control and working memory that are crucial for creative thinking (Koechlin et al. 2003; Petrides 2005; Alvarez and Emory 2006; Dietrich and Kanso 2010; Liang et al. 2016). Increasing behavioral evidence supports the notion that greater cognitive flexibility and inhibition control is associated with higher levels of creativity (Zabelina and Robinson 2010; Benedek et al. 2012; Benedek, Jauk, Sommer, et al. 2014; Chen et al. 2014). Here higher variability of the LPFC identified in our work indicates that the LPFC may be functionally connected with, or switch between different systems, such as the hippocampus, posterior temporal, and parietal cortex during the resting state (Cole et al. 2012, 2013), and this may be related to cognitive flexibility and inhibitory control to switch which is important for creativity.

### Temporal Variability for FCs Within the DMN and Between Cerebral Networks

At the network level, we found that high variability of the DMN was related to a high verbal creativity score. The DMN is associated with spontaneous thought such as mind-wandering, autobiographical retrieval, and episodic future thinking (Raichle et al. 2001; Fox et al. 2015). In the process of creativity, the DMN is involved in the generation of original ideas (Jung et al. 2013). Higher variability within the DMN during the resting state reflects abundant FC patterns which may relate to the trait of frequent transitions between different topics in spontaneous thoughts for creative people.

In addition to the DMN, we also found that high variability of the FCs between the DMN and the dorsal/ventral attention network (DAN/VAN) were related to high verbal creativity, indicating that the dynamic interaction between the DMN and DAN/VAN is related to creative thinking. In contrast to the DMN that generates spontaneous thought, both the DAN and VAN are primarily involved in externally oriented mental



processes, and are responsible for maintaining and re-orienting attention, respectively (Christoff et al. 2016). According to a dynamic framework of spontaneous thought, creative thinking can be defined as a special type of spontaneous thought that is intermediate between mind-wandering and goal-directed thought (Christoff et al. 2016). That is to say, deliberate constraints at various levels are needed from time to time in creative thinking processes. The DMN may provide sustained internally oriented cognition for creative thinking, while it couples with attention networks in a dynamic manner. This may lead to a frequently shifting focus of thoughts to externally oriented cognition for exploring task-related cues from environment, which favors high creativity. Here the high level of variability of FCs between the DMN and attention network appears to characterize the frequently adjusting focus of attention (Vartanian 2009), or shifting of the focus of thoughts or concepts, which are important for creative thinking.

Finally, the variability of the FCs between the task control and visual/auditory networks also correlated positively with verbal creative performance. Creative people can utilize peripheral cues to solve the current problem (Ansburg and Hill 2003). Higher variability of the FCs between the task control and visual/auditory networks may therefore facilitate dynamic selection of external information obtained by visual or auditory inputs, and thus be related to verbal creativity.

### Temporal Variability for FCs Associated with the Cerebellum

In the present study, we also found a positive correlation between verbal creativity and the variability of FCs between the cerebellum and the cingulo-opercular task control network with marginal significance. Functional imaging studies show that the cerebellum is involved in high-level functions such as control of attention, emotion, working memory, music, timing, and language (Akshoomoff et al. 1997; Bostan et al. 2013; et al. 2014; Leggio and Molinari 2015). The cerebellum has also been linked with creativity. For example, the cerebellum was activated in spontaneous creativity improvisation, and was associated with higher expert-rated creative content in drawings (Saggar et al. 2015). The cerebellum has FC with the LPFC and inferior parietal lobule, which are involved in the executive control network, which is closely related to creativity (Dosenbach et al. 2007; Habas et al. 2009). The role of cerebral-cerebellar connectivity during creative thinking has been previously discussed (Schmahmann 1991; Ito 1993, 2006; Abraham 2007; Chavez-Eakle 2007; Vandervert et al. 2007, 2015; Welling 2007; Buckner 2013). Akshoomoff et al. (1997) and Leggio and Molinari (2015) proposed a role for the predictive cognitive functions of the cerebellum, and demonstrated that the cerebellum recognizes serial events, detects violations, and reconstructs correct events. Vandervert (2015) proposed that a cerebrocerebellar blending model is the mechanism behind creativity, such as a high level of scientific discovery. These models emphasize that the interaction between the cerebellum and cerebral cortex, and especially brain regions related to executive functions, play important roles in creativity.

Some neuroimaging studies support this suggestion. For example, increased cerebral-cerebellar FC has been observed in expert musicians during improvisation (Pinho et al. 2014). Our data provide further evidence for the involvement of the cerebellum in creativity by demonstrating that the dynamic interaction between the cerebellum and cerebral cortex, especially the cingulo-opercular task control network, may be closely

related to the production of creative ideas ( $P = 0.0544$ , BH\_FDR corrected). In addition, the dynamic interaction between the cerebellum and other cortical networks, such as the dorsal attention network, salience network, sensory and auditory network, were also correlated with creativity ( $P < 0.05$ , uncorrected). The high variability of FCs between the cerebellum and cerebral cortex indicates abundant FC patterns between the cerebellum and cerebral cortex. These abundant connectivity patterns therefore serve as the functional substrate for the constantly changing “internal models” in the cerebellum (which are affected by the external stimulus passed through the cerebral cortex) (Akshoomoff et al. 1997; Leggio and Molinari 2015; Vandervert 2015), and may therefore help individuals to be more creative.

This study also has some possible limitations. This study correlates resting-state temporal variability with out-of-scanner performance. The results found in resting-state data might not be able to make direct inferences to the task-based creativity process, although in fact a correlation was found in this study between the TTCT score and the variability of the resting-state fMRI. Exploring the dynamic brain networks interaction during creative process (task-based fMRI) is of great importance. In future studies it might be of interest to explore the FC flexibility using appropriate task paradigms.

In summary, the findings of the present study demonstrate that creative cognitive ability is correlated with the dynamic reorganization of resting-state functional brain networks. For the first time, we have provided support for the hypothesis that creative thought is related to dynamical reconfiguration of cortical and cerebellar networks, and in particular, of the DMN during the resting state. This study provides insight into the neural mechanisms underlying creative thinking, and simultaneously offers us a new index to predict individual verbal creativity. Considering the variety of creativity measurement methods and neuroimaging approaches, further studies combining verbal and non-verbal creativity in both resting state and task-related fMRI may further help to explore the role of brain dynamics and variability in creativity. This is the first investigation we know to draw out in a robust “big data” analysis the relation between creativity and the temporal variability of cortical and cerebellar FCs during the resting state. The concept of variability being related to creativity is consistent with the hypothesis that randomness in the transitions from one network state to another that are influenced by the random spiking times of neurons for a given mean firing rate is related to creativity (Rolls 2013, 2016).

### Supplementary Material

Supplementary material is available at *Cerebral Cortex* online.

### Funding

This research was supported by the National Natural Science Foundation of China (31470981; 31571137; 31500885, 31600878), National Outstanding young people plan, the Program for the Top Young Talents by Chongqing, the Fundamental Research Funds for the Central Universities (SWU1709568, SWU1509383, SWU1509451, SWU1609177), Natural Science Foundation of Chongqing (cstc2015jcyjA10106), Fok Ying Tung Education Foundation (151023), General Financial Grant from the China Postdoctoral Science Foundation (2015M572423, 2015M580767), Special Funds from the Chongqing Postdoctoral Science Foundation (Xm2015037), Key research for Humanities and

social sciences of Ministry of Education (14JJD880009). J.Z. is supported by the National Science Foundation of China (NSFC 61573107) and special Funds for Major State Basic Research Projects of China (2015CB856003). J.F. is a Royal Society Wolfson Research Merit Award holder. J.F. is also supported by the Key Program of National Natural Science Foundation of China (No. 91630314), the Key Project of Shanghai Science & Technology Innovation Plan (No. 15JC1400101), the Shanghai Soft Science Research Program (No. 15692106604), and the National Centre for Mathematics and Interdisciplinary Sciences (NCMIS) of the Chinese Academy of Sciences. Z.L. is supported by the Natural Science Foundation of China under Grants (11674352 and 61571341), and the Fundamental Research Funds for the Central Universities of China (No. JBZ170301).

## Notes

*Conflict of Interest:* None declared.

## References

- Abraham A. 2007. Can a neural system geared to bring about rapid, predictive, and efficient function explain creativity? *Creat Res J.* 19:19–24.
- Abraham A. 2014. Creative thinking as orchestrated by semantic processing vs. cognitive control brain networks. *Front Hum Neurosci.* 8:95.
- Abraham A, Pieritz K, Thybusch K, Rutter B, Kröger S, Schweckendiek J, Stark R, Windmann S, Hermann C. 2012. Creativity and the brain: uncovering the neural signature of conceptual expansion. *Neuropsychologia.* 50:1906–1917.
- Akshoomoff NA, Courchesne E, Townsend J. 1997. Attention coordination and anticipatory control. *Int Rev Neurobiol.* 41: 575–598.
- Alvarez JA, Emory E. 2006. Executive function and the frontal lobes: a meta-analytic review. *Neuropsychol Rev.* 16:17–42.
- Ansburg PI, Hill K. 2003. Creative and analytic thinkers differ in their use of attentional resources. *Pers Individ Dif.* 34: 1141–1152.
- Aron AR, Robbins TW, Poldrack RA. 2004. Inhibition and the right inferior frontal cortex. *Trends Cogn Sci.* 8:170–177.
- Aziz-Zadeh L, Liew S-L, Dandekar F. 2013. Exploring the neural correlates of visual creativity. *Soc Cogn Affect Neurosci.* 8: 475–480.
- Bassett DS, Wymbs NF, Porter MA, Mucha PJ, Carlson JM, Grafton ST. 2011. Dynamic reconfiguration of human brain networks during learning. *Proc Natl Acad Sci USA.* 108: 7641–7646.
- Bassett DS, Wymbs NF, Rombach MP, Porter MA, Mucha PJ, Grafton ST. 2013. Task-based core-periphery organization of human brain dynamics. *PLoS Comput Biol.* 9:e1003171.
- Bassett DS, Yang M, Wymbs NF, Grafton ST. 2015. Learning-induced autonomy of sensorimotor systems. *Nat Neurosci.* 18:744–751.
- Beaty RE, Benedek M, Kaufman SB, Silvia PJ. 2015. Default and executive network coupling supports creative idea production. *Sci Rep.* 5:10964.
- Beaty RE, Benedek M, Silvia PJ, Schacter DL. 2016. Creative cognition and brain network dynamics. *Trends Cogn Sci.* 20: 87–95.
- Beaty RE, Benedek M, Wilkins RW, Jauk E, Fink A, Silvia PJ, Hodges DA, Koschutnig K, Neubauer AC. 2014. Creativity and the default network: a functional connectivity analysis of the creative brain at rest. *Neuropsychologia.* 64:92–98.
- Beaty RE, Chen Q, Christensen AP, Qiu J, Silvia PJ, Schacter DL. 2017. Brain networks of the imaginative mind: Dynamic functional connectivity of default and cognitive control networks relates to openness to experience. *Hum Brain Mapp.*
- Benedek M, Franz F, Heene M, Neubauer AC. 2012. Differential effects of cognitive inhibition and intelligence on creativity. *Pers Individ Dif.* 53–334:480–485.
- Benedek M, Jauk E, Fink A, Koschutnig K, Reishofer G, Ebner F, Neubauer AC. 2014. To create or to recall? Neural mechanisms underlying the generation of creative new ideas. *NeuroImage.* 88:125–133.
- Benedek M, Jauk E, Sommer M, Arendasy M, Neubauer AC. 2014. Intelligence, creativity, and cognitive control: The common and differential involvement of executive functions in intelligence and creativity. *Intelligence.* 46:73–83.
- Benjamini Y, Hochberg Y. 1995. Controlling the false discovery rate: a practical and powerful approach to multiple testing. *J R Stat Soc Ser B (Methodol).* 57:289–300.
- Betzel RF, Fukushima M, He Y, Zuo XN, Sporns O. 2016. Dynamic fluctuations coincide with periods of high and low modularity in resting-state functional brain networks. *Neuroimage.* 127:287–297.
- Bohbot VD, Allen JJ, Dagher A, Dumoulin SO, Evans AC, Petrides M, Kalina M, Stepankova K, Nadel L. 2015. Role of the parahippocampal cortex in memory for the configuration but not the identity of objects: converging evidence from patients with selective thermal lesions and fMRI. *Front Hum Neurosci.* 9:431.
- Bossomaier T, Harré M, Knittel A, Snyder A. 2009. A semantic network approach to the creativity quotient (CQ). *Creat Res J.* 21:64–71.
- Bostan AC, Dum RP, Strick PL. 2013. Cerebellar networks with the cerebral cortex and basal ganglia. *Trends Cogn Sci.* 17: 241–254.
- Braun U, Schäfer A, Walter H, Erk S, Romanczuk-Seiferth N, Haddad L, Schweiger JI, Grimm O, Heinz A, Tost H. 2015. Dynamic reconfiguration of frontal brain networks during executive cognition in humans. *Proc Natl Acad Sci USA.* 112: 11678–11683.
- Buckner RL. 2013. The cerebellum and cognitive function: 25 years of insight from anatomy and neuroimaging. *Neuron.* 80:807–815.
- Buckner RL, Carroll DC. 2007. Self-projection and the brain. *Trends Cogn Sci.* 11:49–57.
- Calhoun VD, Miller R, Pearlson G, Adalı T. 2014. The chronnectome: time-varying connectivity networks as the next frontier in fMRI data discovery. *Neuron.* 84:262–274.
- Cavanna AE, Trimble MR. 2006. The precuneus: a review of its functional anatomy and behavioural correlates. *Brain.* 129: 564–583.
- Chavez-Eakle RA. 2007. From incubation to insight: working memory and the role of the cerebellum. *Creat Res J.* 19: 31–34.
- Chen T, Cai W, Ryali S, Supekar K, Menon V. 2016. Distinct global brain dynamics and spatiotemporal organization of the salience network. *PLoS Biol.* 14:e1002469.
- Chen Q, Yang W, Li W, Wei D, Li H, Lei Q, Zhang Q, Qiu J. 2014. Association of creative achievement with cognitive flexibility by a combined voxel-based morphometry and resting-state functional connectivity study. *Neuroimage.* 102:474–483.
- Chen X, Zhang H, Zhang L, Shen C, Lee SW, Shen D. 2017. Extraction of dynamic functional connectivity from brain grey matter and white matter for MCI classification. *Hum Brain Mapp.* 38(10):5019–5034.

- Christoff K, Irving ZC, Fox KC, Spreng RN, Andrews-Hanna JR. 2016. Mind-wandering as spontaneous thought: a dynamic framework. *Nat Rev Neurosci*. 17(11):718–731.
- Cohen JR. 2017. The behavioral and cognitive relevance of time-varying, dynamic changes in functional connectivity. *Neuroimage*. In Press.
- Cole MW, Reynolds JR, Power JD, Repovs G, Anticevic A, Braver TS. 2013. Multi-task connectivity reveals flexible hubs for adaptive task control. *Nat Neurosci*. 16:1348–1355.
- Cole MW, Yarkoni T, Repovs G, Anticevic A, Braver TS. 2012. Global connectivity of prefrontal cortex predicts cognitive control and intelligence. *J Neurosci*. 32:8988–8999.
- Dandan T, Haixue Z, Wenfu L, Wenjing Y, Jiang Q, Qinglin Z. 2013. Brain activity in using heuristic prototype to solve insightful problems. *Behav Brain Res*. 253:139–144.
- Dietrich A, Kanso R. 2010. A review of EEG, ERP, and neuroimaging studies of creativity and insight. *Psychol Bull*. 136:822.
- Dosenbach NU, Fair DA, Miezin FM, Cohen AL, Wenger KK, Dosenbach RA, Fox MD, Snyder AZ, Vincent JL, Raichle ME, et al. 2007. Distinct brain networks for adaptive and stable task control in humans. *Proc Natl Acad Sci USA*. 104:11073–11078.
- Duff MC, Kurczek J, Rubin R, Cohen NJ, Tranel D. 2013. Hippocampal amnesia disrupts creative thinking. *Hippocampus*. 23:1143–1149.
- Ellamil M, Dobson C, Beeman M, Christoff K. 2012. Evaluative and generative modes of thought during the creative process. *Neuroimage*. 59:1783–1794.
- Fink A, Benedek M. 2014. EEG alpha power and creative ideation. *Neurosci Biobehav Rev*. 44:111–123.
- Fink A, Grabner RH, Benedek M, Reishofer G, Hauswirth V, Fally M, Neuper C, Ebner F, Neubauer AC. 2009. The creative brain: Investigation of brain activity during creative problem solving by means of EEG and fMRI. *Hum Brain Mapp*. 30:734–748.
- Fink A, Grabner RH, Gebauer D, Reishofer G, Koschutnig K, Ebner F. 2010. Enhancing creativity by means of cognitive stimulation: evidence from an fMRI study. *NeuroImage*. 52:1687–1695.
- Fink A, Koschutnig K, Benedek M, Reishofer G, Ischebeck A, Weiss EM, Ebner F. 2012. Stimulating creativity via the exposure to other people's ideas. *Hum Brain Mapp*. 33:2603–2610.
- Fink A, Koschutnig K, Hutterer L, Steiner E, Benedek M, Weber B, Reishofer G, Papousek I, Weiss EM. 2014. Gray matter density in relation to different facets of verbal creativity. *Brain Struct Funct*. 219:1263–1269.
- Finke RA, Ward TB, Smith SM 1992. Creative cognition: theory, research, and applications.
- Fox KC, Spreng RN, Ellamil M, Andrews-Hanna JR, Christoff K. 2015. The wandering brain: meta-analysis of functional neuroimaging studies of mind-wandering and related spontaneous thought processes. *Neuroimage*. 111:611–621.
- Garrett DD, Kovacevic N, McIntosh AR, Grady CL. 2011. The importance of being variable. *J Neurosci*. 31:4496–4503.
- Gonen-Yaacovi G, de Souza LC, Levy R, Urbanski M, Josse G, Volle E. 2013. Rostral and caudal prefrontal contribution to creativity: a meta-analysis of functional imaging data. *Front Hum Neurosci*. 7:465.
- Green AE, Kraemer DJ, Fugelsang JA, Gray JR, Dunbar KN. 2012. Neural correlates of creativity in analogical reasoning. *J Exp Psychol Learn Mem Cogn*. 38:264–272.
- Habas C, Kamdar N, Nguyen D, Prater K, Beckmann CF, Menon V, Greicius MD. 2009. Distinct cerebellar contributions to intrinsic connectivity networks. *J Neurosci*. 29:8586–8594.
- Hutchison RM, Womelsdorf T, Allen EA, Bandettini PA, Calhoun VD, Corbetta M, Della Penna S, Duyn JH, Glover GH, Gonzalez-Castillo J. 2013. Dynamic functional connectivity: promise, issues, and interpretations. *Neuroimage*. 80:360–378.
- Ito M. 1993. Movement and thought: identical control mechanisms by the cerebellum. *Trends Neurosci*. 16:448–450. discussion 453–444.
- Ito M. 2006. Cerebellar circuitry as a neuronal machine. *Prog Neurobiol*. 78:272–303.
- Jaeggi SM, Buschkuhl M, Jonides J, Perrig WJ. 2008. Improving fluid intelligence with training on working memory. *Proc Natl Acad Sci*. 105:6829–6833.
- Jung RE, Mead BS, Carrasco J, Flores RA. 2013. The structure of creative cognition in the human brain. *Front Hum Neurosci*. 7:10.3389.
- Jung-Beeman M, Bowden EM, Haberman J, Frymiare JL, Arambel-Liu S, Greenblatt R, Reber PJ, Kounios J. 2004. Neural activity when people solve verbal problems with insight. *PLoS Biol*. 2:e97.
- Kang J, Wang L, Yan C, Wang J, Liang X, He Y. 2011. Characterizing dynamic functional connectivity in the resting brain using variable parameter regression and Kalman filtering approaches. *Neuroimage*. 56:1222–1234.
- Kesner RP, Rolls ET. 2015. A computational theory of hippocampal function, and tests of the theory: new developments. *Neurosci Biobehav Rev*. 48:92–147.
- KH E, Chen SH, Ho MH, Desmond JE. 2014. A meta-analysis of cerebellar contributions to higher cognition from PET and fMRI studies. *Hum Brain Mapp*. 35:593–615.
- Kleibeuwer SW, Koolschijn PC, Jolles DD, De Dreu CK, Crone EA. 2013. The neural coding of creative idea generation across adolescence and early adulthood. *Front Hum Neurosci*. 7:905.
- Koechlin E, Ody C, Kouneiher F. 2003. The architecture of cognitive control in the human prefrontal cortex. *Science*. 302:1181–1185.
- Kopell NJ, Gritton HJ, Whittington MA, Kramer MA. 2014. Beyond the connectome: the dynamome. *Neuron*. 83:1319–1328.
- Leggio M, Molinari M. 2015. Cerebellar sequencing: a trick for predicting the future. *Cerebellum*. 14:35–38.
- Li D, Chen G. 1989. Combined Raven's test (CRT): Chinese revised version. Shanghai: EastChinaNormal University.
- Li W, Yang J, Zhang Q, Li G, Qiu J. 2016. The association between resting functional connectivity and visual creativity. *Sci Rep*. 6:25395.
- Liang X, Zou Q, He Y, Yang Y. 2016. Topologically reorganized connectivity architecture of default-mode, executive-control, and salience networks across working memory task loads. *Cereb Cortex*. 26:1501–1511.
- Liu S, Erkkinen MG, Healey ML, Xu Y, Swett KE, Chow HM, Braun AR. 2015. Brain activity and connectivity during poetry composition: toward a multidimensional model of the creative process. *Hum Brain Mapp*. 36:3351–3372.
- Liu F, Wang Y, Li M, Wang W, Li R, Zhang Z, Lu G, Chen H. 2017. Dynamic functional network connectivity in idiopathic generalized epilepsy with generalized tonic-clonic seizure. *Hum Brain Mapp*. 38(2):957–973.
- Lundstrom BN, Ingvar M, Petersson KM. 2005. The role of precuneus and left inferior frontal cortex during source memory episodic retrieval. *Neuroimage*. 27:824–834.
- Luo J, Niki K. 2003. Function of hippocampus in “insight” of problem solving. *Hippocampus*. 13:316–323.
- Miller EK, Cohen JD. 2001. An integrative theory of prefrontal cortex function. *Annu Rev Neurosci*. 24:167–202.

- Morcom AM, Fletcher PC. 2007. Cognitive neuroscience: the case for design rather than default. *NeuroImage*. 37: 1073–1082.
- Mumford MD. 2002. Social innovation: ten cases from Benjamin Franklin. *Creat Res J*. 14:253–266.
- Petrides M. 2005. Lateral prefrontal cortex: architectonic and functional organization. *Philos Trans R Soc Lond B Biol Sci*. 360:781–795.
- Pinho AL, de Manzano O, Fransson P, Eriksson H, Ullen F. 2014. Connecting to create: expertise in musical improvisation is associated with increased functional connectivity between premotor and prefrontal areas. *J Neurosci*. 34:6156–6163.
- Power JD, Cohen AL, Nelson SM, Wig GS, Barnes KA, Church JA, Vogel AC, Laumann TO, Miezin FM, Schlaggar BL. 2011. Functional network organization of the human brain. *Neuron*. 72:665–678.
- Qiu J, Li H, Jou J, Liu J, Luo Y, Feng T, Wu Z, Zhang Q. 2010. Neural correlates of the “Aha” experiences: evidence from an fMRI study of insight problem solving. *Cortex*. 46: 397–403.
- Raichle ME, MacLeod AM, Snyder AZ, Powers WJ, Gusnard DA, Shulman GL. 2001. A default mode of brain function. *Proc Natl Acad Sci*. 98:676–682.
- Raichle ME, Snyder AZ. 2007. A default mode of brain function: a brief history of an evolving idea. *Neuroimage*. 37: 1083–1090.
- Rolls ET. 2013. *Emotion and decision making explained*. Oxford University Press, Oxford, UK.
- Rolls ET. 2016. *Cerebral cortex: principles of operation*.
- Runco MA, Jaeger GJ. 2012. The standard definition of creativity. *Creat Res J*. 24:92–96.
- Sadigh-Eteghad S, Majdi A, Farhoudi M, Talebi M, Mahmoudi J. 2014. Different patterns of brain activation in normal aging and Alzheimer’s disease from cognitive task: meta analysis using activation likelihood estimation. *J Neurol Sci*. 343: 159–166.
- Saggar M, Quintin EM, Kienitz E, Bott NT, Sun Z, Hong WC, Chien YH, Liu N, Dougherty RF, Royalty A, et al. 2015. Pictionary-based fMRI paradigm to study the neural correlates of spontaneous improvisation and figural creativity. *Sci Rep*. 5:10894.
- Schacter DL, Addis DR, Hassabis D, Martin VC, Spreng RN, Szpunar KK. 2012. The future of memory: remembering, imagining, and the brain. *Neuron*. 76:677–694.
- Schmahmann JD. 1991. An emerging concept: the cerebellar contribution to higher function. *Arch Neurol*. 48:1178–1187.
- Shah C, Erhard K, Ortheil HJ, Kaza E, Kessler C, Lotze M. 2013. Neural correlates of creative writing: an fMRI study. *Hum Brain Mapp*. 34:1088–1101.
- Shamay-Tsoory SG, Adler N, Aharon-Peretz J, Perry D, Mayselless N. 2011. The origins of originality: the neural bases of creative thinking and originality. *Neuropsychologia*. 49:178–185.
- Stein MI. 1953. Creativity and culture. *J Psychol*. 36:311–322.
- Sternberg RJ, Lubart TI. 1996. Investing in creativity. *Am Psychol*. 51:677.
- Sun J, Chen Q, Zhang Q, Li Y, Li H, Wei D, Yang W, Qiu J. 2016. Training your brain to be more creative: brain functional and structural changes induced by divergent thinking training. *Hum Brain Mapp*. 37(10):3375–3387.
- Takeuchi H, Taki Y, Hashizume H, Sassa Y, Nagase T, Nouchi R, Kawashima R. 2012. The association between resting functional connectivity and creativity. *Cereb Cortex*. 22: 2921–2929.
- Takeuchi H, Taki Y, Sassa Y, Hashizume H, Sekiguchi A, Fukushima A, Kawashima R. 2010. White matter structures associated with creativity: evidence from diffusion tensor imaging. *Neuroimage*. 51:11–18.
- Tang C, Li A, Huang H, Cheng X, Gao Y, Chen H, Huang Q, Luo Y, Xue Y, Zuo Q. 2012. Effects of lead pollution in SY River on children’s intelligence. *Life Sci J*. 9:458–464.
- Torrance E. 1974. *The Torrance tests of creative thinking-TTCT Manual and Scoring Guide: Verbal test A, figural test*. Lexington, KY: Ginn.
- Vandervert L. 2015. How music training enhances working memory: a cerebrotocerebellar blending mechanism that can lead equally to scientific discovery and therapeutic efficacy in neurological disorders. *Cerebellum Ataxias*. 2:11.
- Vandervert LR, Schimpf PH, Liu H. 2007. How working memory and the cerebellum collaborate to produce creativity and innovation. *Creat Res J*. 19:1–18.
- Vartanian O. 2009. Variable attention facilitates creative problem solving. *Psychol Aesthet Creat Arts*. 3:57.
- Wang D, Qian M. 1989. Revision on the Combined Raven’s test for the rural in China [J]. *Psychol Sci*. 5:004.
- Wei D, Yang J, Li W, Wang K, Zhang Q, Qiu J. 2014. Increased resting functional connectivity of the medial prefrontal cortex in creativity by means of cognitive stimulation. *Cortex*. 51:92–102.
- Welling H. 2007. Cerebellar creativity: abstraction of mental movements. *Creat Res J*. 19:55–57.
- Wu X, Yang W, Tong D, Sun J, Chen Q, Wei D, Zhang Q, Zhang M, Qiu J. 2015. A meta-analysis of neuroimaging studies on divergent thinking using activation likelihood estimation. *Hum Brain Mapp*. 36:2703–2718.
- Yang Z, Craddock RC, Margulies DS, Yan CG, Milham MP. 2014. Common intrinsic connectivity states among posteromedial cortex subdivisions: insights from analysis of temporal dynamics. *Neuroimage*. 93(Pt 1):124–137.
- Ye R, Hong D, Torrance EP. 1988. Cross cultural comparison of creative thinking between Chinese and American students using Torrance Test. *Chin J Appl Psychol*. 3:22–29.
- Yu Q, Erhardt EB, Sui J, Du Y, He H, Hjelms D, Cetin MS, Rachakonda S, Miller RL, Pearlson G, et al. 2015. Assessing dynamic brain graphs of time-varying connectivity in fMRI data: application to healthy controls and patients with schizophrenia. *Neuroimage*. 107:345–355.
- Zabelina DL, Robinson MD. 2010. Creativity as flexible cognitive control. *Psychol Aesthet Creat Arts*. 4:136.
- Zhang J, Cheng W, Liu Z, Lei X, Yao Y, Ben B, Liu Y, Kendrick K, Lu G, Feng J. 2016. Neural, electrophysiological and anatomical basis of brainnetwork variability and its characteristic changes in mental disorders. *Brain*. 139:2307–2321.
- Zhu F, Zhang Q, Qiu J. 2013. Relating inter-individual differences in verbal creative thinking to cerebral structures: an optimal voxel-based morphometry study. *PLoS ONE*. 8:e79272.